

KX6 Indoor units



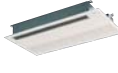
FDT



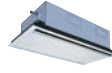
FDTC



FDTQ



FDTS



FDTW



FDQS

Type	Model	Nominal Cooling	Capacity (kW) Heating	Power Supply 230V/50Hz/1ph	Dimensions H x W x D (mm)	Weight (kg)	Air Volume (m ³ /s)	Sound Pressure Level (dBA)	Retail Price
FDT: 4-Way Cassette	FDT28KXE6	2.8	3.2	5A	246 x 840 x 840	22	0.23 - 0.27 - 0.30	31 / 33 / 35	£838
	FDI36KXE6	3.6	4.0	5A	246 x 840 x 840	22	0.23 - 0.27 - 0.30	31 / 33 / 35	£865
	FDI45KXE6	4.5	5.0	5A	246 x 840 x 840	22	0.23 - 0.27 - 0.30	31 / 33 / 35	£930
	FDT56KXE6	5.6	6.3	5A	246 x 840 x 840	24	0.23 - 0.27 - 0.30	31 / 33 / 35	£995
	FDI71KXE6	7.1	8.0	5A	246 x 840 x 840	24	0.23 - 0.27 - 0.30	31 / 33 / 35	£1,049
	FDT90KXE6	9.0	10.0	5A	298 x 840 x 840	27	0.33 - 0.40 - 0.45	36 / 39 / 42	£1,201
	FDT112KXE6	11.2	12.5	5A	298 x 840 x 840	27	0.33 - 0.40 - 0.45	36 / 39 / 42	£1,394
	FDT140KXE6	14.0	16.0	5A	298 x 840 x 840	27	0.38 - 0.45 - 0.50	40 / 43 / 45	£1,580
FDT160KXE6	16.0	18.0	5A	298 x 840 x 840	27	0.38 - 0.45 - 0.50	41 / 43 / 45	£1,739	
Fascia Panel	T-PSA-36W-E	-	-	-	35 x 950 x 950	5.5	-	-	£139
FDTC: Cassette (600x600)	FDT22KXE6	2.2	2.5	5A	248 x 570 x 570	14	0.13 - 0.14 - 0.16	32 / 33 / 35	£813
	FDT28KXE6	2.8	3.2	5A	248 x 570 x 570	14	0.13 - 0.14 - 0.16	32 / 33 / 35	£821
	FDT36KXE6	3.6	4.0	5A	248 x 570 x 570	15	0.13 - 0.15 - 0.17	34 / 36 / 38	£862
	FDT45KXE6	4.5	5.0	5A	248 x 570 x 570	15	0.15 - 0.17 - 0.18	36 / 38 / 40	£927
	FDT56KXE6	5.6	6.3	5A	248 x 570 x 570	15	0.17 - 0.19 - 0.22	39 / 42 / 45	£993
	Fascia Panel	TC-PSA-24W-ER	-	-	-	35 x 700 x 700	3.5	-	-
FDTQ: 1-Way Cassette (600x600)	FDTQ22KXE6	2.2	2.5	5A	250 x 570 x 570	19	0.09 - 0.12	33 / 38	£916
	FDTQ28KXE6	2.8	3.2	5A	250 x 570 x 570	19	0.09 - 0.12	33 / 38	£937
	FDTQ36KXE6	3.6	4.0	5A	250 x 570 x 570	19	0.09 - 0.12	33 / 38	£959
Fascia Panel	TQ-PSA-15W-E	-	-	-	32 x 625 x 650	2.5	-	-	£139
FDTS: 1-Way Cassette Fascia Panel (Model 45)	FDT545KXE6	4.5	5.0	5A	194 x 1040 x 650	26	0.17 - 0.20 - 0.23	36 / 38 / 43	£1,342
	TS-PSA-29W-E	-	-	-	10 x 1290 x 770	6	-	-	£139
	FDT571KXE6	7.1	8.0	5A	194 x 1300 x 650	30	0.20 - 0.25 - 0.30	36 / 38 / 44	£1,504
Fascia Panel (Model 71)	TS-PSA-39W-E	-	-	-	10 x 1500 x 790	7	-	-	£139
FDTW: 2-Way Cassette	FDTW28KXE6	2.8	3.2	5A	287 x 817 x 620	18	0.17 - 0.20 - 0.23	32 / 34 / 39	£1,033
	FDTW45KXE6	4.5	5.0	5A	287 x 817 x 620	19	0.17 - 0.20 - 0.23	32 / 34 / 39	£1,163
	FDTW56KXE6	5.6	6.3	5A	287 x 817 x 620	19	0.17 - 0.20 - 0.23	32 / 34 / 39	£1,260
Fascia Panel (Models 28 - 56)	TW-PSA-24W-E	-	-	-	8 x 1055 x 680	7	-	-	£139
	FDTW71KXE6	7.1	8.0	5A	342 x 1054 x 620	26	0.18 - 0.22 - 0.27	35 / 36 / 41	£1,347
	FDTW90KXE6	9.0	10.0	5A	342 x 1054 x 620	26	0.20 - 0.27 - 0.32	36 / 37 / 41	£1,541
Fascia Panel (Models 71 - 90)	TW-PSA-34W-E	-	-	-	8 x 1300 x 680	9	-	-	£139
	FDTW112KXE6	11.2	12.5	5A	357 x 1524 x 620	38	0.38 - 0.42 - 0.47	37 / 38 / 44	£1,898
	FDTW140KXE6	14.0	16.0	5A	357 x 1524 x 620	38	0.40 - 0.47 - 0.53	39 / 41 / 45	£2,007
Fascia Panel (Models 112 - 140)	TW-PSA-44W-E	-	-	-	8 x 1770 x 680	11	-	-	£139
FDQS: Ultra Slim Ducted	FDQS22KXE6	2.2	2.5	5A	180 x 940 x 580	27	0.12 - 0.13 - 0.15	33 / 35 / 37	£731
	FDQS28KXE6	2.8	3.2	5A	180 x 940 x 580	27	0.12 - 0.13 - 0.15	33 / 35 / 37	£748
	FDQS36KXE6	3.6	4.0	5A	180 x 940 x 580	28	0.12 - 0.13 - 0.15	33 / 35 / 37	£779
	FDQS45KXE6	4.5	5.0	5A	180 x 940 x 580	28	0.15 - 0.17 - 0.18	33 / 35 / 37	£797
	FDQS56KXE6	5.6	6.3	5A	180 x 940 x 580	28	0.15 - 0.17 - 0.18	33 / 35 / 37	£826

KX6 Indoor units



FDUM



FDU



FDE



FDK



FDL



FDU



SAF

Type	Model	Nominal Capacity (kW) Cooling Heating	Power Supply 230V/50Hz/1ph	Dimensions H x W x D (mm)	Weight (kg)	Air Volume (m ³ /s)	Sound Pressure Level (dBA)	Retail Price
FDUM: Ducted	FDUM22KXE6	2.2 2.5	5A	299 x 750 x 635	33	0.13 - 0.15 - 0.17	28 / 31 / 34	£755
	FDUM28KXE6	2.8 3.2	5A	299 x 750 x 635	34	0.17 - 0.18 - 0.20	28 / 31 / 34	£770
	FDUM36KXE6	3.6 4.0	5A	299 x 750 x 635	34	0.17 - 0.18 - 0.20	28 / 31 / 34	£846
	FDUM45KXE6	4.5 5.0	5A	299 x 750 x 635	34	0.18 - 0.20 - 0.23	29 / 32 / 35	£872
	FDUM56KXE6	5.6 6.3	5A	299 x 750 x 635	34	0.18 - 0.20 - 0.23	29 / 32 / 35	£903
	FDUM71KXE6	7.1 8.0	5A	299 x 950 x 635	40	0.23 - 0.27 - 0.30	29 / 32 / 35	£964
	FDUM90KXE6	9.0 10.0	5A	299 x 950 x 635	40	0.25 - 0.30 - 0.33	30 / 33 / 36	£1,105
	FDUM112KXE6	11.2 12.5	5A	350 x 1370 x 635	59	0.37 - 0.42 - 0.47	32 / 35 / 37	£1,329
FDUM140KXE6	14.0 16.0	5A	350 x 1370 x 635	59	0.45 - 0.52 - 0.57	33 / 36 / 38	£1,418	
FDU: High-Static Ducted	FDU71KXE6	7.1 8.0	5A	295 x 850 x 650	40	0.33 - 0.42	37 / 41	£1,012
	FDU90KXE6	9.0 10.0	5A	350 x 1370 x 650	63	0.45 - 0.57	37 / 42	£1,160
	FDU112KXE6	11.2 12.5	5A	350 x 1370 x 650	63	0.45 - 0.57	38 / 42	£1,395
	FDU140KXE6	14.0 16.0	5A	350 x 1370 x 650	63	0.56 - 0.70	39 / 43	£1,489
	FDU224KXE6	22.4 25.0	5A	360 x 1570 x 830	92	0.85	48	£2,591
	FDU280KXE6	28.0 31.5	5A	360 x 1570 x 830	92	1.13	49	£2,667
FDE: Ceiling Suspended	FDE36KXE6	3.6 4.0	5A	210 x 1070 x 690	30	0.12 - 0.15 - 0.18	36 / 38 / 39	£1,222
	FDE45KXE6	4.5 5.0	5A	210 x 1070 x 690	30	0.12 - 0.15 - 0.18	36 / 38 / 39	£1,266
	FDE56KXE6	5.6 6.3	5A	210 x 1070 x 690	30	0.12 - 0.15 - 0.18	36 / 38 / 39	£1,298
	FDE71KXE6	7.1 8.0	5A	210 x 320 x 690	36	0.20 - 0.23 - 0.30	37 / 39 / 41	£1,385
	FDE112KXE6	11.2 12.5	5A	250 x 1620 x 690	46	0.35 - 0.38 - 0.43	39 / 41 / 44	£1,438
	FDE140KXE6	14.0 16.0	5A	250 x 1620 x 690	46	0.38 - 0.43 - 0.48	43 / 44 / 46	£1,677
FDK: High Wall	FDK22KXE6	2.2 2.5	5A	298 x 840 x 259	12	0.10 - 0.12 - 0.13	37 / 39 / 40	£628
	FDK28KXE6	2.8 3.2	5A	298 x 840 x 259	12	0.10 - 0.12 - 0.13	37 / 39 / 40	£643
	FDK36KXE6	3.6 4.0	5A	298 x 840 x 259	12	0.12 - 0.15 - 0.17	37 / 39 / 41	£660
	FDK45KXE6	4.5 5.0	5A	298 x 840 x 259	12.5	0.12 - 0.15 - 0.18	37 / 39 / 41	£684
	FDK56KXE6	5.6 6.3	5A	298 x 840 x 259	13	0.17 - 0.20 - 0.23	37 / 39 / 46	£727
	FDK71KXE6	7.1 8.0	5A	318 x 1098 x 248	15.5	0.25 - 0.30 - 0.35	39 / 43 / 47	£759
	FDL: Floor Mounted (With Casing)	FDL28KXE6	2.8 3.2	5A	630 x 1196 x 225	32	0.17 - 0.18 - 0.20	36 / 38 / 41
FDL45KXE6	4.5 5.0	5A	630 x 1196 x 225	32	0.17 - 0.20 - 0.23	40 / 41 / 43	£1,106	
FDL71KXE6	7.1 8.0	5A	630 x 1481 x 225	40	0.20 - 0.25 - 0.30	40 / 41 / 43	£1,195	
FDU: Floor Mounted Concealed Type (Without Casing)	FDU28KXE6	2.8 3.2	5A	630 x 1077 x 225	25	0.17 - 0.18 - 0.20	36 / 38 / 41	£910
	FDU45KXE6	4.5 5.0	5A	630 x 1077 x 225	25	0.17 - 0.20 - 0.23	40 / 41 / 43	£985
	FDU56KXE6	5.6 6.3	5A	630 x 1077 x 225	25	0.17 - 0.20 - 0.23	40 / 41 / 43	£1,031
	FDU71KXE6	7.1 8.0	5A	630 x 1362 x 225	32	0.20 - 0.25 - 0.30	40 / 41 / 43	£1,090
SAF: Fresh Air Ventilation And Heat Exchange Unit	SAF250E4	- -	5A	270 x 882 x 599	29	0.05 - 0.07	22 / 28	£1,076
	SAF350E4	- -	5A	270 x 882 x 804	37	0.08 - 0.10	26 / 32	£1,239
	SAF500E4	- -	5A	270 x 962 x 904	43	0.10 - 0.14	26 / 34	£1,330
	SAF800E4	- -	5A	388 x 1322 x 884	71	0.18 - 0.22	34 / 39	£2,153
	SAF1000E4	- -	5A	388 x 1322 x 1135	83	0.23 - 0.28	33 / 38.5	£2,369